



12-16 Fitzroy Street, London, W1T

£725,000



12-16 Fitzroy Street, London, W1T

£725,000

A beautifully presented two bedroom apartment situated in a modern purpose built block just moments from Fitzroy Square and Oxford Street. The apartment comprises of a bright reception room, seperate fitted kitchen, two bedrooms and a bespoke bathroom. Further benefitting from being neutrally decorated throughout.

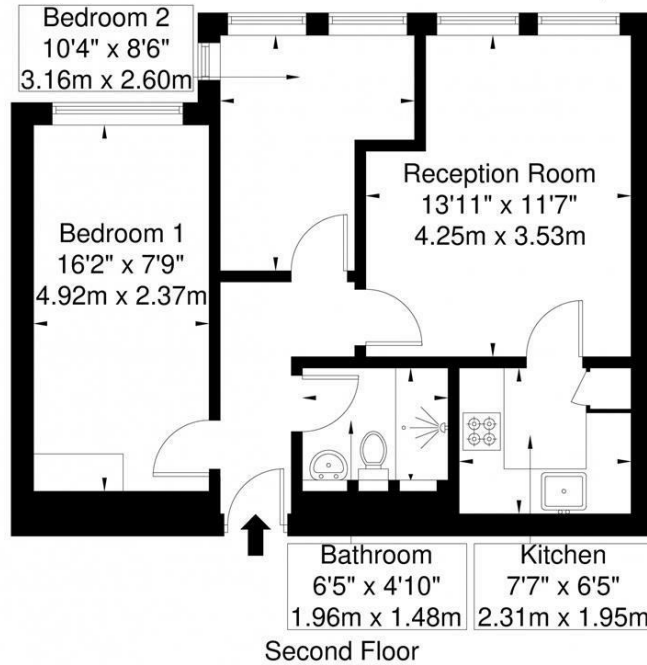
Local stations are Goodge Street (Northern Lline) and Tottenham Court Road (Northern Line & Central Line) with the future Crossrail link. UCL and the University of Westminster campus is located nearby.



Floor Plans

Fitzroy Street, London, W1T

Approx. Gross Internal Area = 50.6 sq m / 544 sq ft



Ref

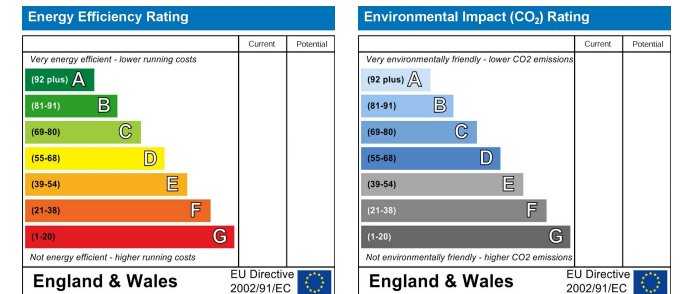
Copyright **BLEU PLAN**

The Floor plan is not to scale and measurements and areas shown are approximate and therefore should be used for illustrative purposes only. The plan has been prepared in accordance with the RICS code of Measuring Practice and whilst we have confidence in the information produced it must not be relied on. If there is any aspect of particular importance, you should carry out or commission your own inspection of the property.
Copyright © BLEUPLAN

Area Map



Energy Performance Graph



73 Baker Street
London W1U 6RD
T 020 7034 1414
E info@primemetro.co.uk

1 Northway's Parade
Finchley Road, London NW3 5EN
T 020 7701 2878
E infoswiss@primemetro.co.uk



www.primemetro.co.uk